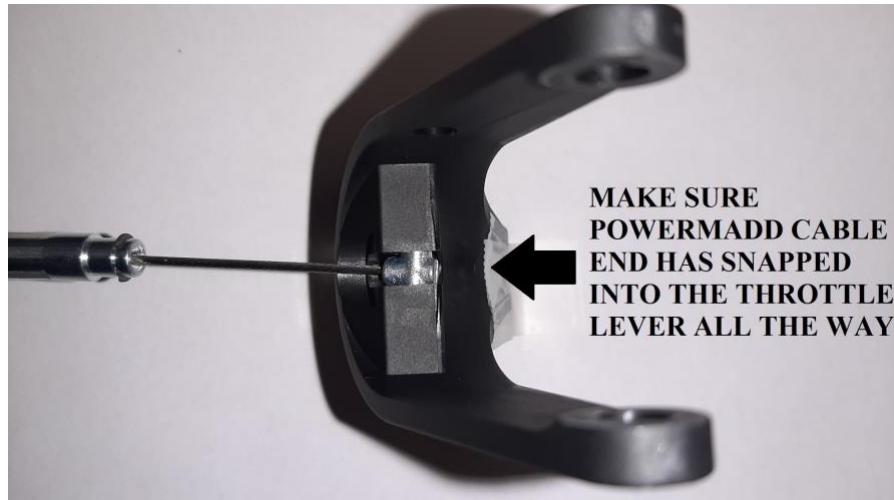


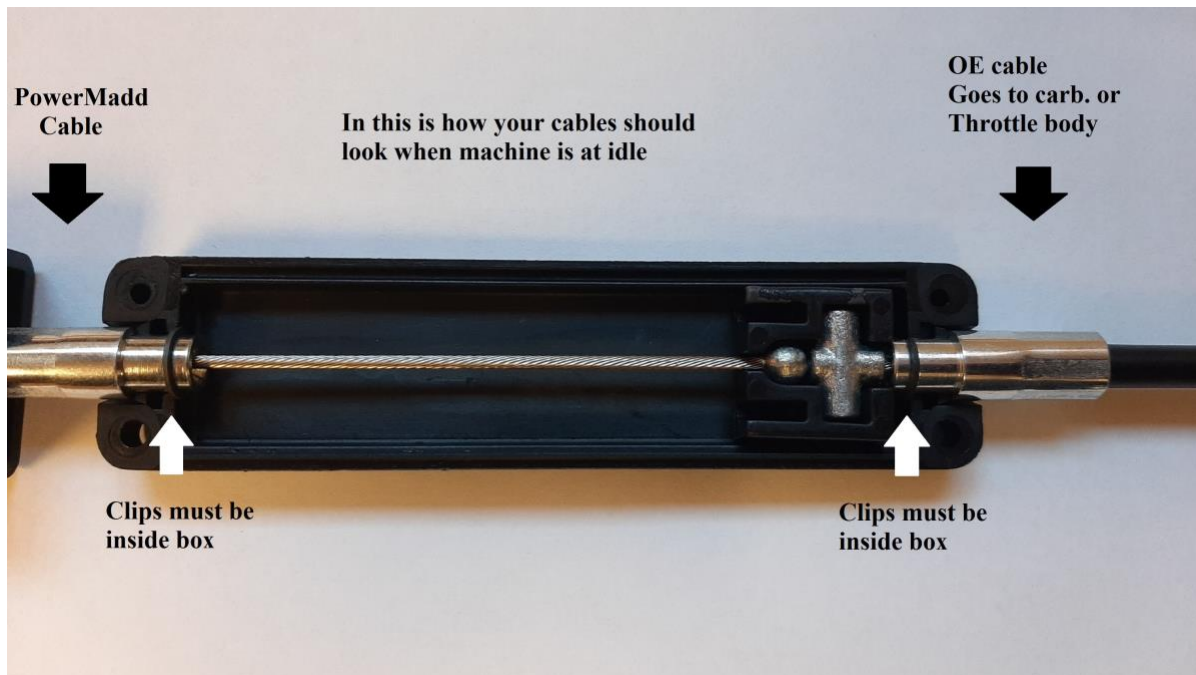
## 43592 Throttle Cable Extension Troubleshooting

Here are a few items to check:

1. Make sure that the PowerMadd cable has snapped into the throttle lever all the way. This is very important and sometimes difficult to identify if the cable end is in all the way.



2. Make sure the junction box is assembled like the photo below. If the circle clips are not on the inside of the junction box you will not have enough cable length.



3. Make sure the cables are not binding anywhere. Try and make large bends in both cables. With everything assembled except the throttle lever verify proper operation of cables and that they return to idle.
4. You should have a little play (1/8") in your throttle lever.
5. Check on the PowerMadd cable that the cable adjuster is turned all the way in. There is also adjustments on some stock cables and possibly near the throttle body.