



Sentinel and Fuzion – Polaris ProTaper Mount Kit

Installation Instructions for Part No. 34457 (Snowmobiles)

HARDWARE INCLUDED:

Qty	Description
1	Left Bracket
1	Right Bracket
2	Cast Strap
2	M6 x 75mm Hex Head Bolt
1	M6 x 25mm Hex Head Bolt
2	Inserts (Pre 2018)
2	M6 Lock Nuts
1	Insert Right (2018 and up)
1	Insert Left (2018 and up)
4	Large Spacers
2	Flat Washer
2	M5x10mm Button Head Screw
2	M5-.8 x 10mm Set Screw
4	Small Spacers

TOOLS REQUIRED:

- 3mm Hex Wrench
- 10mm Wrench (2)
- 2.5mm Hex Wrench



READ ALL INSTRUCTIONS CAREFULLY BEFORE INSTALLATION!

NOTE: PowerMadd Pro Taper mounting brackets are designed to mount to the bare handlebar on the up-sweep section of the handlebars. **SEE PHOTO** Mounting instructions for the Pre 2018 sleds and 2018-current sleds are different. Be sure to read them completely.



PRE 2018 SLEDS - BRACKET INSTALL

STEP 1: Slide a Cast strap onto the up-sweep section of the handlebar. Any wires should go outside the strap, NOT under.

STEP 2: Attach the Bracket to the Cast Strap by inserting the short M5 button head screw and tighten it with a 3mm hex wrench. The right side bracket will be marked with an “R” and the left side will be marked with an “L”. Insert the M6 x 25mm bolt with the flat washer through the bracket and thread into the Cast Strap. This adjustment bolt is used to achieve the desired tightness of the mount. For now, leave the bracket loose so you can adjust the position up or down after attaching the handguard to the bracket.

STEP 3: Insert a Pre 2018 insert into the tip of the mounting bracket making sure to match the shoulder into the recess of the mounting bracket. Please note the index marking as they should only go in one way. These inserts are interchangeable with left and right. **SEE PHOTOS**



STEP 4: Now determine the best location of the handguard by moving it left or right to get the most coverage. The handguard should reach slightly beyond the end of the handlebars. **SEE PHOTO** Using 2 small spacers and 2 large spacers, position the handguard into the location you have chosen. **SEE PHOTO** Slide the long bolt through from the outside to the inside of the handguard and tighten with the lock nut. Position the handguard and now fully tighten the mounting bracket.

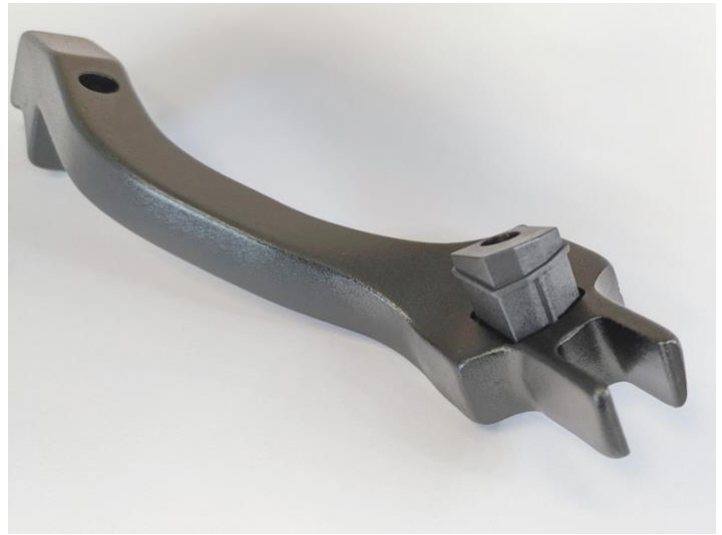


2018 and up SLEDS - BRACKET INSTALL

STEP 1: Slide a Cast strap onto the up-sweep section of the handlebar. Any wires should go outside the strap, NOT under.

STEP 2: Attach the Bracket to the Cast Strap by inserting the short M5 button head screw and tighten it with a 3mm hex wrench. The right side bracket will be marked with an “R” and the left side will be marked with an “L”. Insert the M6 x 25mm bolt with the flat washer through the bracket and thread into the Cast Strap. This adjustment bolt is used to achieve the desired tightness of the mount. For now, leave the bracket loose so you can adjust the position up or down after attaching the handguard to the bracket.

STEP 3: Insert a 2018 and up insert (**marked with “R”**) into the tip of the right mounting bracket and the insert (**marked with “L”**) into the tip of the left bracket. Make sure to match the shoulder into the recess of the mounting bracket. Please note the index marking as they should only go in one way. **SEE PHOTOS**



STEP 4: Now determine the best location of the handguard by moving it left or right to get the most coverage. The handguard should reach slightly beyond the end of the handlebars. **SEE PHOTO** You will be using 1 small spacer and 2 large spacer to mount the handguard onto the bracket. **SEE PHOTO** Slide the long bolt through outside mounting tab on the handguard and on the inside the tab slide two large spacers. Place handguard onto the bracket and use 1 small spacer on the other side of the mounting bracket. This can be difficult since the angle of the hole going through the insert is at an angle. Once the long bolt is all the way through the inner handguard tab, tighten with a lock nut. Position the handguard and now fully tighten the mounting bracket.



At this time go back and check the torque of all fasteners. All fasteners may need to be retightened after the first ride. Check the tightness of the bracket and handguard before each ride.

LIMITED WARRANTY

POWERMADD warrants this product to be free from defects in material and workmanship under use for the purpose it was intended. **POWERMADD** shall not be liable for damage or injury caused by defective materials or workmanship. **POWERMADD** may elect to repair or replace this product, but is the sole judge of any defects in their product. This warranty does not cover any labor costs to remove or reinstall this product and is effect for one year from the original purchase date.