

LED light Trouble shooting guide

Lights do not come on:

Check for 12v power coming off your power source. Using a volt meter test the power source. **(PHOTO 1)** If you have used our T-tap connectors slide a volt meter probe into the T-tap to test for power. If you do not have power check and make sure your connections are good. Open the T-tap connector and make sure it has a good contact to the wire.

Verify that all bullet connectors are connected correctly and have a solid connection. **(PHOTO 2)** It is possible that from the factory the bullet connectors were crimped incorrectly and are crimped to the wire insulation instead of the actually wire. This can be inspected visually.

Test that the two sets of wire coming out of the LED module have 12 DC volts. **(PHOTO 3)** Test each pair of wires with a volt meter. At this point if you do not have power here and have verified that the power connections are good please contact PowerMadd.

If you do have power coming out of the two pairs of LED light wires coming out of the LED control box and have verified that all the bullet connections are good, please contact PowerMadd.

Only one light comes on:

Verify that all bullet connectors are connected correctly and have a solid connection. **(PHOTO 2)** It is possible that from the factory the bullet connectors were crimped incorrectly and are crimped to the wire insulation instead of the actually wire. This can be inspected visually.

Test that the two sets of wire coming out of the LED module have power. **(PHOTO 3)** Test each pair of wires with a volt meter. At this point if you do not have power here and have verified that the power connections are good please contact PowerMadd.

If you do have power coming out of the two pairs of LED light wires coming out of the LED control box and have verified that all the bullet connections are good, please contact PowerMadd.

Lights flicker

Check for 12v power coming off your power source. **(PHOTO 1)** Using a volt meter test the power source. If you have used our T-tap connectors slide a volt meter probe into the T-tap to test for power. If you do not have power check and make sure your connections are good. Open the T-tap connector and make sure it has good contact the wire.

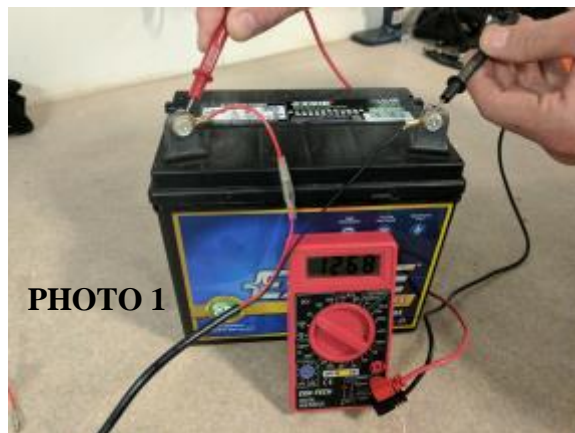


PHOTO 1



PHOTO 2

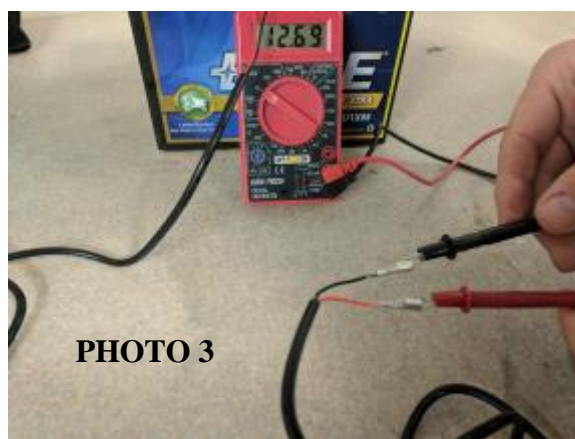


PHOTO 3

Verify that all bullet connectors are connected correctly and have a solid connection. **(PHOTO 2)** It is possible that from the factory the bullet connectors were crimped incorrectly and are crimped to the wire insulation instead of the actual wire. This can be inspected visually.

Test that the two sets of wire coming out of the LED module have power. **(PHOTO 3)** Test each pair of wires with a volt meter. At this point if you do not have power here and have verified that the power connections are good please contact PowerMadd.

If you do have power coming out of the two pairs of LED light wires coming out of the LED control box and have verified that all the bullet connections are good, please contact PowerMadd.